

levelling elements in cast iron  
type VL



## levelling elements in cast iron version VL

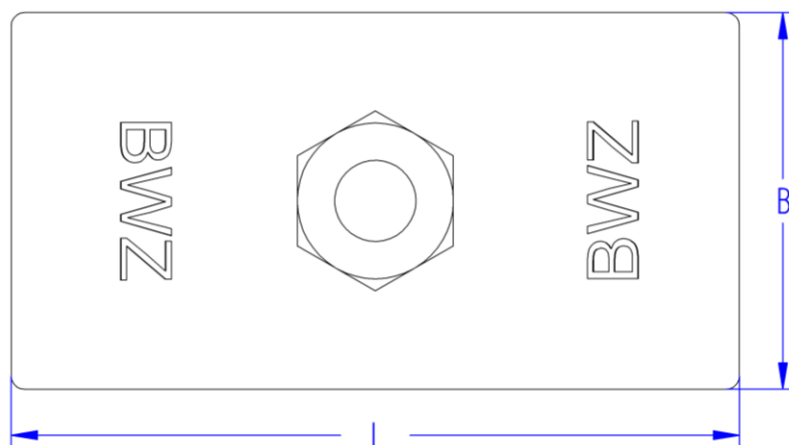
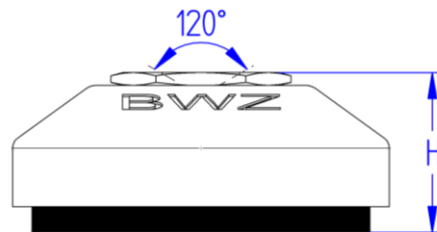
A combination of base in cast iron and non-fixed levelling screw with 120° tip and square shaft in zinc-galvanized version for an economic installation, levelling and vibration-isolated mounting of machines and devices.

Suitable levelling screws with 120° tip and square shaft in zinc-galvanized version may be selected from the table following the type selection below. Stainless steel screws on request.

standard colour of the base in cast iron: RAL 9006 white-aluminium  
other colour tones according to RAL on request

optional: special electro-plating for the bases in cast iron and levelling screws in nickel or chrome

schematic illustration version VL



### levelling elements in cast iron type VL with elastomer NBR 5514

applications: passive isolation e.g. for metrology equipment, scales, dosage units and optical devices  
 elastomer surface smooth, without tread pattern

type		L / B	H	hardness	load
description	article number	mm	mm	±5 Shore	daN
16VL NBR5514	7250 0001	167x87	37	55	600
21VL NBR5514	7260 0001	217x118	37	55	1000

### levelling elements in cast iron type VL with elastomer NBR 5518

applications: passive isolation e.g. for metrology equipment, scales, dosage units and optical devices  
 elastomer surface with tread pattern - higher insulation effect as compared to type with NBR 5514

type		L / B	H	hardness	load
description	article number	mm	mm	±5 Shore	daN
16VL NBR5518	7250 0002	167x87	41	55	600
21VL NBR5518	7260 0002	217x118	41	55	1000

### levelling elements in cast iron type VL with elastomer NBR 7516

applications: damping / insulation e.g. for highly dynamic machinery, presses, shears, punches, compressors and pumps  
 elastomer surface with tread pattern

type		L / B	H	hardness	load
description	article number	mm	mm	±5 Shore	daN
16VL NBR7516	7250 0003	167x87	39	75	1500
21VL NBR7516	7260 0003	217x118	39	75	2500

### levelling elements in cast iron type VL with elastomer NBR 7525

applications: damping / insulation e.g. for highly dynamic machinery, presses, shears, punches, compressors and pumps  
 elastomer surface with tread pattern - higher insulation / damping effect as compared to type with NBR 7516

type		L / B	H	hardness	load
description	article number	mm	mm	±5 Shore	daN
16VL NBR7525	7250 0004	167x87	48	75	1500
21VL NBR7525	7260 0004	217x118	48	75	2500

### levelling elements in cast iron type VL with elastomer NBR 8516

applications: damping of e.g. general ( CNC ) machine tools, textile machines, graphic machines  
and machines with horizontal thrust  
elastomer surface with tread pattern

type		L / B	H	hardness	load
description	article number	mm	mm	±5 Shore	daN
16VL NBR8516	7250 0005	167x87	38	90	1700
21VL NBR8516	7260 0005	217x118	38	90	2800

### levelling elements in cast iron type VL with elastomer NBR 8525

applications: damping of e.g. general ( CNC ) machine tools, textile machines, graphic machines  
and machines with horizontal thrust  
elastomer surface with tread pattern - higher damping effect as compared to type with NBR 8516

type		L / B	H	hardness	load
description	article number	mm	mm	±5 Shore	daN
16VL NBR8525	7250 0006	167x87	48	90	1700
21VL NBR8525	7260 0006	217x118	48	90	2800

### levelling elements in cast iron type VL with elastomer NBR 9014

applications: damping of e.g. machining centres, transfer units, ( CNC ) machine tools, circular- and flat-grinding machines, long-bedded machines with low intrinsic rigidity, drilling and milling devices  
elastomer surface smooth, without tread pattern

type		L / B	H	hardness	load
description	article number	mm	mm	±5 Shore	daN
16VL NBR9014	7250 0007	167x87	38	90	1700
21VL NBR9014	7260 0007	217x118	38	90	2800

## suitable levelling screws with 120° tip and square shaft in zinc-galvanized version

length specification of the levelling screws relates to the net thread length

thread		net thread length
description	article number	mm
M8 x 100	317 045	100
M8 x 1,0 pitch		on request
M10 x 100	317 001	100
M10 x 150	317 003	150
M10 x 1,0 pitch		on request
M12 x 100	317 006	100
M12 x 150	317 008	150
M12 x 1,5 pitch		on request
M14 x 100	317 011	100
M16 x 100	317 016	100
M16 x 150	317 018	150
M16 x 200	317 019	200
M16 x 250	317 020	250
M16 x 1,5 pitch		on request
M18 x 100	317 022	100
M20 x 100	317 027	100
M20 x 150	317 029	150
M20 x 200	317 030	200
M20 x 1,5 pitch		on request
M24 x 150	317 034	150
M24 x 250	317 036	250
M24 x 1,5 pitch		on request
M30 x 150	317 039	150
M30 x 250	317 041	250
M30 x 1,5 pitch		on request

levelling screws are supplied with the following accessories

2 x nut DIN 934 / ISO 4032  
 1 x washer DIN 125 / ISO 7089  
 1 x washer DIN 9021 / ISO 7093  
 from thread size M24 upwards  
 2 x nut DIN 934 / ISO 4032  
 2 x washer DIN 125 / ISO 7089

assembly of the levelling screws with the nuts and washers, individual packaging of levelling elements in quick-lock mechanism bags and customized article labelling available at extra charge

special thread lengths, alternative electroplating with nickel or chrome, threads with special fine pitch, stainless steel levelling screws or special materials on request

custom solutions and modifications as per customer's request are possible any time, owing to our high internal manufacturing depth ( CNC and conventional )

## data on materials and tolerances

### components in cast iron

according to DIN EN ISO 8062-3 DCTG 10 -/- manufacturing tolerance: according to ISO 2768-mk  
 materials: EN GJL 200 / EN GJL 250

### elastomers

shore-hardness A measurement: according to DIN 53505 or rather DIN ISO 7619-1  
 tolerances for dimensions with tool-form based elastomer parts according to DIN ISO 3302-1, class M3  
 materials: NBR 55° / 75° / 90° ±5 shore A, dimensional tolerance ±1 mm

### threads / levelling screws

according to DIN 976 -/- manufacturing tolerance: according to ISO 2768-mk  
 materials: steel blank 4.8 - steel zinc-coated 4.8 - stainless steel A2

### manufacturing components from round bar material

according to DIN 668/671 – EN10278 -/- manufacturing tolerance: according to ISO 2768-mk  
 materials: steel blank 11SMn30+C -/- stainless steel 1.4305

Technical modifications subject to change! Any previous versions of this document are herewith null and void!